

121°29'0"W

121°28'0"W

121°27'0"W

121°26'0"W

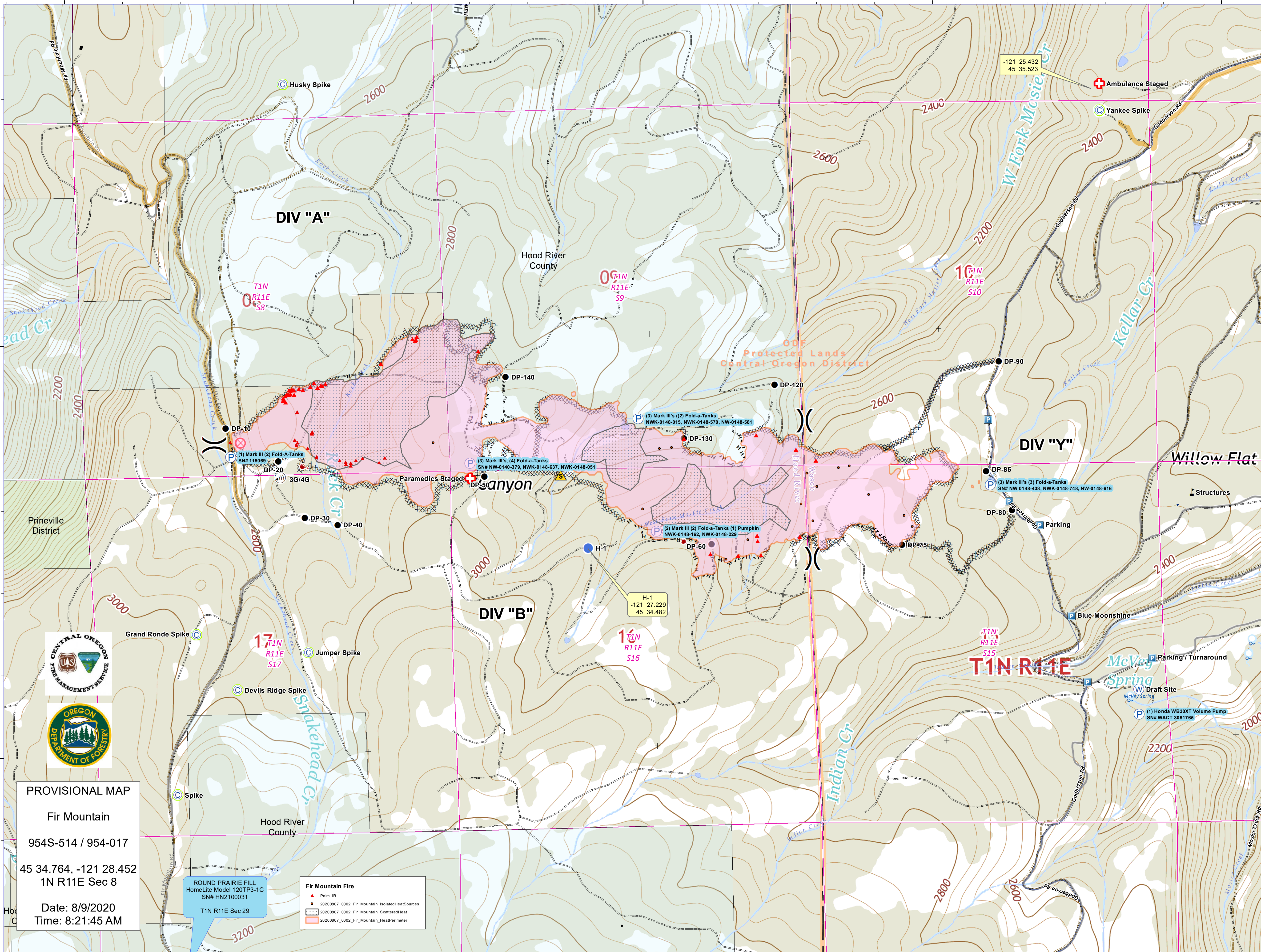
121°25'0"W

45°35'0"N

45°35'0"N

45°34'0"N

45°34'0"N



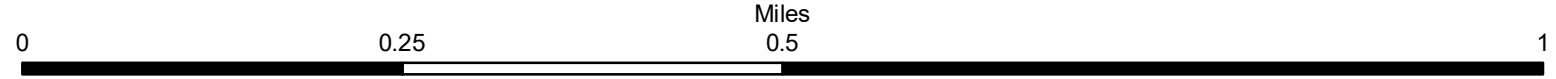
PROVISIONAL MAP
 Fir Mountain
 954S-514 / 954-017
 45 34.764, -121 28.452
 1N R11E Sec 8
 Date: 8/9/2020
 Time: 8:21:45 AM

ROUND PRAIRIE FILL
 HomeLite Model 120TP3-1C
 SN# HN2100031
 T1N R11E Sec 29

Fir Mountain Fire
 ▲ Palm_IR
 ● 20200807_0002_Fir_Mountain_IsolatedHeatSources
 ○ 20200807_0002_Fir_Mountain_ScatteredHeat
 □ 20200807_0002_Fir_Mountain_HeatPerimeter

Roof Tops were derived from satellite algorithm and may contain false positives and omissions

Note: Road layers are from multiple sources and may have multiple names or designations.



Kirk Metzger - 541-815-8028
 metzger.kirk@gmail.com
 Date: 8/9/2020 Time: 8:21:45 AM

Coordinate System: WGS 1984 UTM Zone 10N
 Projection: Transverse Mercator
 Datum: WGS 1984



This product is reproduced from geospatial information obtained from multiple public entities. GIS data and product accuracy may vary. They may be developed from sources of differing accuracy, accurate only at certain scales, based on modeling or interpretation, incomplete while being created or revised. GIS products for purposes other than those for which they were created, may yield inaccurate or misleading results.

www.IncidentSupport.com